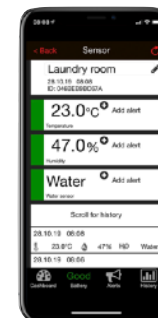


Cat.Nr. 30.3301.02

Temperature sensor with waterproof cable sensor
Monitors e.g. the temperature of aquarium, freezer or fridge, pool or pond.



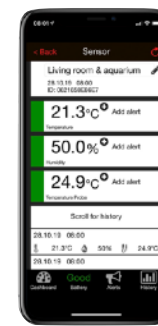
Cat.Nr. 30.3305.02

Temperature humidity sensor with water detector
Monitors the room climate and warns you of water leakage, e.g. in case of a defective washing machine or flooding.



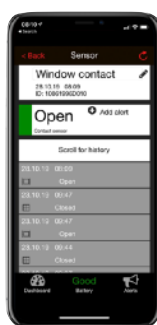
Cat.Nr. 30.3303.02

Temperature humidity sensor
Informs you at any time about temperature and humidity outside or in different rooms, e.g. in the bedroom, children's room, cellar or storage room.



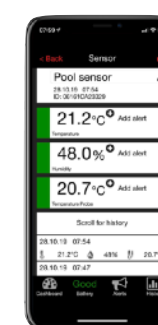
Cat.Nr. 30.3304.02

Temperature humidity with waterproof cable sensor
Monitors the temperature and humidity of the environment, outside or inside, and a additional temperature with the cable sensor e.g. in the pond or pool, aquarium or freezer.



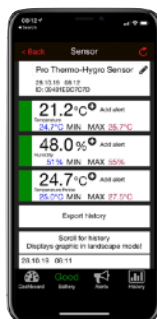
Cat.Nr. 30.3311.02

Door and window contact sensor
Ideal for monitoring open doors and windows throughout your home.



Cat.Nr. 30.3310.02

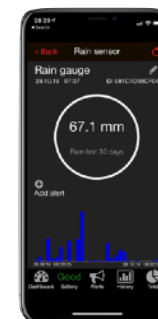
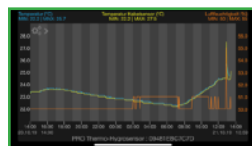
Temperature humidity sensor with pool sensor
Monitors outside and inside the temperature and humidity of the environment and at the same time the water temperature in the swimming pool, whirlpool or garden pond, via the pool transmitter.



Cat.Nr. 30.3302.02

Temperature humidity sensor with professional temperature cable sensor. For the monitoring of the room climate and the simultaneous temperature monitoring of cooling and air conditioning units or liquids via the precise cable sensor with extended measuring range.

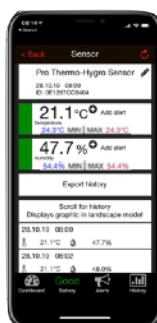
PR+



Cat.Nr. 30.3306.02

Rain gauge. With this rain-gauge you can determine the amount of precipitation easily and exactly. This is important for gardening and agricultural purposes, and interesting for all those who want to know more about nature.

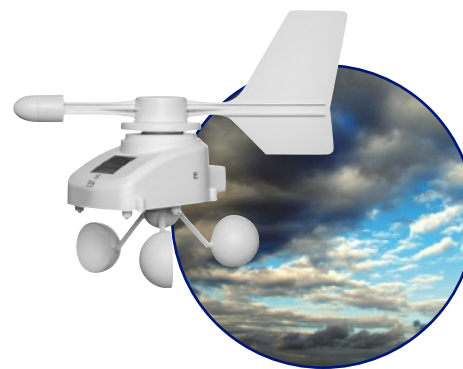
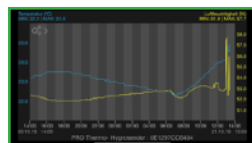
PR+



Cat.Nr. 30.3312.02

Professional temperature humidity sensor. For professional monitoring of temperature and humidity in storage or living rooms, greenhouses, server and other air-conditioned rooms or outdoor areas.

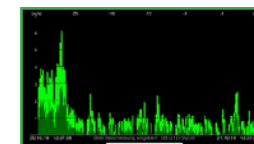
PR+



Cat.Nr. 30.3307.02

Wind sensor. Monitors accurate the wind direction and speed at the installation site. This is interesting for many outdoor activities like air and water sports and for the agricultural and construction sector.

PR+



Cat.Nr. 30.3313.02

Professional temperature sensor with waterproof cable sensor. For professional monitoring of the air temperature and a second temperature via the waterproof cable sensor for use e.g. in storage rooms, laboratories, industry, pharmacies or in air-conditioned rooms. This transmitter is also compatible with the Observer platform.

PR+



Additionally compatible with the WeatherHub Observer platform

- Retrieval of the data via the browser-based Observer platform
- For professional monitoring and documentation of climatic data
- Complete automation of monitoring
- Many different options of alarming (by e-mail)
- The platform is free of charge and requires no additional usage fees or subscription costs
- Works with Windows, Apple and Linux Computers as well as Android, iOS and Windows Phone

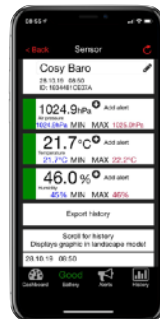




Cat.Nr. 30.3060.01 KLIMA@HOME

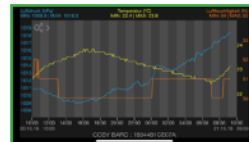
Ideal for monitoring room climate and 3 other measuring points for temperature and humidity, e.g. children's room, outdoor area or the greenhouse. Measurements are displayed directly on the display and in the WeatherHub app.

Also available as starter kit with gateway
Art.: 31.4007.02



Cat.Nr. 35.1154.01 COSY BARO

Barometer-Thermometer-Hygrometer
How's the local weather developing today? Just a glance at the COSY BARO and you're fully informed. An integrated electronic barometer measures the air pressure; The course of the last 24 hours can be observed on the bar chart. To control the indoor climate, the temperature and humidity are displayed. Display of measured values directly on the display and in the WeatherHub app.



Standard features in the WeatherHub app

- Overview of all current measurements of the sensors
- Alarm settings
- Push notification in case of an alarm
- Battery status of the sensors
- Set names of the sensors
- Main settings of the app

Additional functions in the WeatherHub app

Functionality, depending on the transmitter (see table)

- Graphic functions
- Max-min function
- Export function
- Graphic history
- Overview function



External sensor
e.g. 30.3303.02*



Cat.Nr. 30.5043.01 PRO+ COSY RADAR

For monitoring of the temperature and humidity, by the simultaneous checking of the outdoor climate with the temperature and humidity transmitter, shows you concrete recommendations for the active improvement of the room climate.

Also available as starter kit with gateway
Art.: 31.4008.02

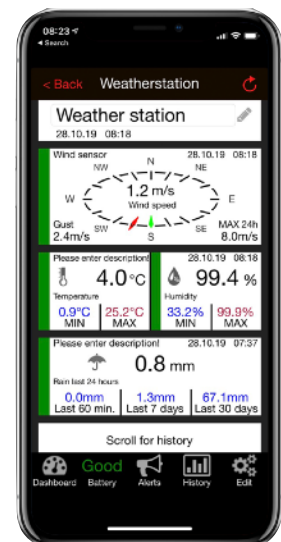
„Room air noticeably too humid. Airing doesn't improve the indoor environment. Increase temperature in cool rooms. Active dehumidification. Mould hazard!“

Info

Combination of sensors to create the weather station

If you have a gateway, wind sensor, rain gauge and the temperature humidity transmitter 30.3303.02, you can configure the transmitters as a weather station.

Also available as starter kit with gateway
Art.: 31.4005.02

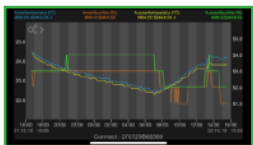




Cat.Nr. 35.1143.01.IT

Wireless Weather Station CONNECT

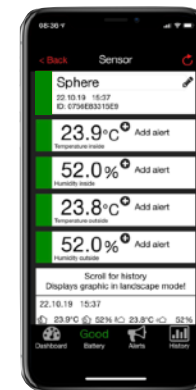
- Outdoor temperature and humidity via transmitter
- Indoor climate with indoor temperature and humidity
- Weather forecast with symbols and atmospheric pressure trend
- Radio-controlled clock with alarm and date
- Display of temperature and humidity (inside & outside) in the WeatherHub app



Cat.Nr. 35.1148.01.IT

Wireless Weather Station SPHERE

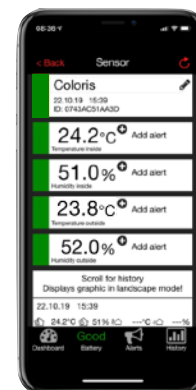
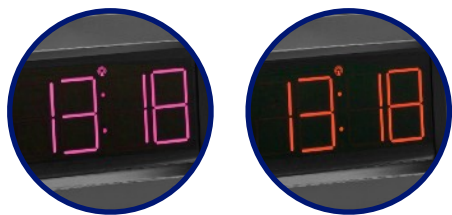
- High-contrast display varies in 600 colour hues
- Outdoor temperature and humidity via transmitter
- Display of indoor temperature and humidity
- Weather forecast with symbols and atmospheric pressure trend
- Display of temperature and humidity (inside & outside) in the WeatherHub app














Cat.Nr. 35.1147.01.IT

Wireless Weather Station COLORIS

- High-contrast display varies in 600 colour hues
- Outdoor temperature and humidity via transmitter
- Display of indoor temperature and humidity
- Weather forecast with symbols and atmospheric pressure trend
- Display of temperature and humidity (inside & outside) in the WeatherHub app



	30.3301.02	30.3302.02	30.3303.02	30.3304.02	30.3305.02	30.3306.02	30.3307.02	30.3310.02	30.3311.02
Temperature	✓	✓	✓	✓	✓			✓	
Humidity		✓	✓	✓	✓			✓	
Rain gauge						✓			
Wind sensor							✓		
Barometer									
Contact sensor									✓
Pool sensor								✓	
Temperature cable sensor	✓ (ca. 100cm)	✓ (ca. 150cm)		✓ (ca. 150cm)					
Water detector					✓ (150cm)				
Compatible with the OBSERVER - Plattform		✓ 							
Additional functions in the app 		<ul style="list-style-type: none"> • Graphic function  • Max.-min function • Export function 				<ul style="list-style-type: none"> • Graphic function  • Graphic history • Overview function 	<ul style="list-style-type: none"> • Graphic function  • Max.-min function • Export function 		
Data storage	3 months	18 months	3 months	3 months	3 months	unlimited	unlimited	3 months	up to 40 contacts
Measuring range temperature sensor		-39,9 ... +59,9°C -39,8 ... 139,8°F	-39,9 ... +59,9°C -39,8 ... 139,8°F	-39,9 ... +59,9°C -39,8 ... 139,8°F	-39,9 ... +59,9°C -39,8 ... 139,8°F			-39,9 ... +59,9°C -39,8 ... 139,8°F	
Measuring range temperature - base station									
Measuring range humidity		1 ... 99% rel. H.	1 ... 99% rel. H.	1 ... 99% rel. H.	1 ... 99% rel. H.			1 ... 99% rel. H.	
Measuring range cable sensor	-29,9 ... +59,9°C -21,8 ... 139,8°F	-50 ... +110°C -58 ... 230°F		-39,9 ... +59,9°C -39,8 ... 139,8°F	dry / wet				
Measuring range pool sensor								0 ... +60°C 32 ... 140°F	
Measuring range rain gauge						0 ... 300 mm/h			
Measuring range wind sensor							0 ... 50 m/s 0 ... 180 km/h		
Transmission interval to the gateway	7 minutes	3 ½ minutes; immediately transmission with significant change	7 minutes	7 minutes	7 minutes	at rain / rocker movement	7 minutes	7 minutes	immediately at opening/closing
Max. range transmitter to gateway (868 Mhz)	100m	200m	200m	200m	200m	100m	100m	100m 25m (poolsensor)	100m
Batteries (not inclusive)	2 x 1,5V AAA	2 x 1,5V AAA	2 x 1,5V AAA	2 x 1,5V AAA	2 x 1,5V AAA	2 x 1,5V AA	Solar	4 x 1,5V AA	6 x LR 44
Special features		Accuracy cable sensor ± 0,5°C							

	30.3312.02	30.3313.02	30.3060.01	30.5043.01 (+ transmitter)	35.1143.01.IT	35.1154.01	35.1147	35.1148
Temperature	✓	✓	✓	✓	✓	✓	✓	✓
Humidity	✓		✓	✓	✓	✓	✓	✓
Rain gauge								
Wind sensor								
Barometer						✓		
Contact sensor								
Pool sensor								
Temperature cable sensor		✓ (approx. 140cm)						
Water detector								
Compatible with the OBSERVER - Plattform	✓ 	✓ 						
Additional functions in the app	 <ul style="list-style-type: none"> • Graphic function • Max.-min function • Export function 	 <ul style="list-style-type: none"> • Graphic function • Max.-min function • Export function 		 <ul style="list-style-type: none"> • (vent. recommendations) • Max.-min function • Graphic function • Dew point 		 <ul style="list-style-type: none"> • Graphic function • Max.-min function • Export function 		
Data storage	3 months	3 months	3 months	3 months	3 months	3 months	3 months	3 months
Measuring range temperature sensor	-39,9 ... +59,9°C -39,8 ... 139,8°F	-30 ... +60°C -22 ... 140°F	-39,9 ... +59,9°C -39,8 ... 139,8°F	-39,9 ... +59,9°C -39,8 ... 139,8°F	-39,9 ... +59,9°C -39,8 ... 139,8°F	-39,9 ... +59,9°C -39,8 ... 139,8°F	-39,9 ... +59,9°C -39,8 ... 139,8°F	-39,9 ... +59,9°C -39,8 ... 139,8°F
Measuring range temperature - base station			-10 ... +60°C 14 ... 140°F		-10 ... +60°C 14 ... 140°F	-10 ... +60°C 14 ... 140°F	-10 ... +60°C 14 ... 140°F	-10 ... +60°C 14 ... 140°F
Measuring range humidity	1 ... 99% rel. H.		1 ... 99% rel. H.	1 ... 99% rel. H.	Sensor: 1 ... 99% rel. H. Base: 20 ... 95% re. H.	1 ... 99% rel. H.	1 ... 99% rel. H.	1 ... 99% rel. H.
Measuring range cable sensor		-30 ... +60°C -22 ... 140°F						
Measuring range pool sensor								
Measuring range rain gauge								
Measuring range wind sensor								
Transmission interval to the gateway	7 minutes; immediately transmission with significant change	7 minutes	7 minutes	10 minutes; immediately transmission with significant change	7 minutes	6 minutes	7 minutes	7 minutes
Max. range transmitter to gateway (868 Mhz)	200m	200m	100m	100m (COSY RADAR)	100m	100m (COSY BARO)	100m	100m
Batteries (not inclusive)	2 x 1,5V AA	2 x 1,5V AAA	9 x 1,5V AA	2 x 1,5V AAA (COSY RADAR)	2 x 1,5V C (base station) 2 x 1,5V AA (sensor)	2 x 1,5V AAA	Power adaptor (base station) 2 x 1,5V AA (sensor)	Pwr. adaptor (base) 2 x 1,5V AA (backup) 2 x 1,5V AA (sensor)
Special features	Swiss-Precision Sensor ± 3% @ 20...90%		With 3 sensors + display unit	with display unit	with sensor and display unit	with display unit	with sensor and display unit	with sensor and display unit